

\$749,900 - 156 Eldorado Close Ne, Calgary

MLS® #A2209161

\$749,900

5 Bedroom, 4.00 Bathroom, 2,037 sqft
Residential on 0.10 Acres

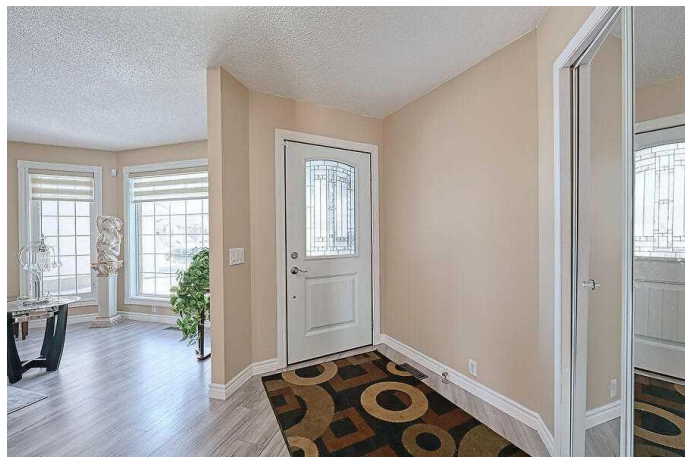
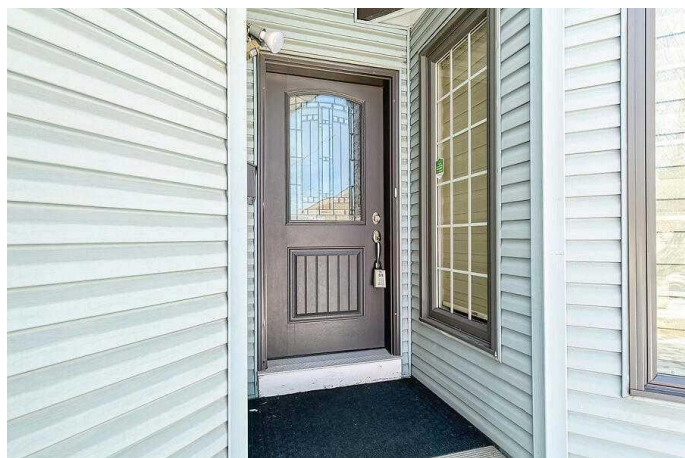
Monterey Park, Calgary, Alberta

Beautiful 2 Storey fully finished with over 2500 sq.ft, 4+1 Bedrooms, 3 1/2 Bathrooms, Central air conditioning, Newer Windows, Composite Decking. Newer 2 furnaces, Hot water tank. MAIN FLOOR- Formal Living room, Dining room, Upgraded Kitchen with all Stainless steel Appliances, Kitchen Nook area, Family room with Fire place, Laundry room and 1/2 Bathroom. UPPER FLOOR- 4 Good size Bedrooms with 2 walk-in closets, full 5 pcs Ensuite with double sinks, separate shower, jetted tub and washroom. LOWER LEVEL- Big rec room, 5th Bedroom, 3 pcs bathroom and storage room. Big back yard with Garden shed.

Built in 1991

Essential Information

MLS® #	A2209161
Price	\$749,900
Bedrooms	5
Bathrooms	4.00
Full Baths	3
Half Baths	1
Square Footage	2,037
Acres	0.10
Year Built	1991
Type	Residential
Sub-Type	Detached
Style	2 Storey



Status Active

Community Information

Address 156 Eldorado Close Ne
Subdivision Monterey Park
City Calgary
County Calgary
Province Alberta
Postal Code T1Y 6T4

Amenities

Parking Spaces 4
Parking Double Garage Attached, Garage Door Opener, Concrete Driveway, Front Drive
of Garages 2

Interior

Interior Features Ceiling Fan(s), Central Vacuum, Granite Counters, Jetted Tub, No Animal Home, Storage, Walk-In Closet(s)
Appliances Central Air Conditioner, Dishwasher, Dryer, Electric Stove, Garage Control(s), Refrigerator, Washer, Window Coverings
Heating Forced Air, Natural Gas
Cooling Central Air
Fireplace Yes
of Fireplaces 1
Fireplaces Family Room, Gas, Mantle
Has Basement Yes
Basement Finished, Full

Exterior

Exterior Features Other, Storage
Lot Description Back Yard, Front Yard, Landscaped, Rectangular Lot
Roof Asphalt Shingle
Construction Vinyl Siding
Foundation Poured Concrete

Additional Information

Date Listed April 7th, 2025
Days on Market 9
Zoning R-CG

Listing Details

Listing Office RE/MAX Real Estate (Central)

Data is supplied by Pillar 9â,,ç MLSÂ® System. Pillar 9â,,ç is the owner of the copyright in its MLSÂ® System. Data is deemed reliable but is not guaranteed accurate by Pillar 9â,,ç. The trademarks MLSÂ®, Multiple Listing ServiceÂ® and the associated logos are owned by The Canadian Real Estate Association (CREA) and identify the quality of services provided by real estate professionals who are members of CREA. Used under license.