

# \$179,900 - 222, 7007 4a Street Sw, Calgary

MLS® #A2210315

**\$179,900**

1 Bedroom, 1.00 Bathroom, 387 sqft  
Residential on 0.00 Acres

Kingsland, Calgary, Alberta

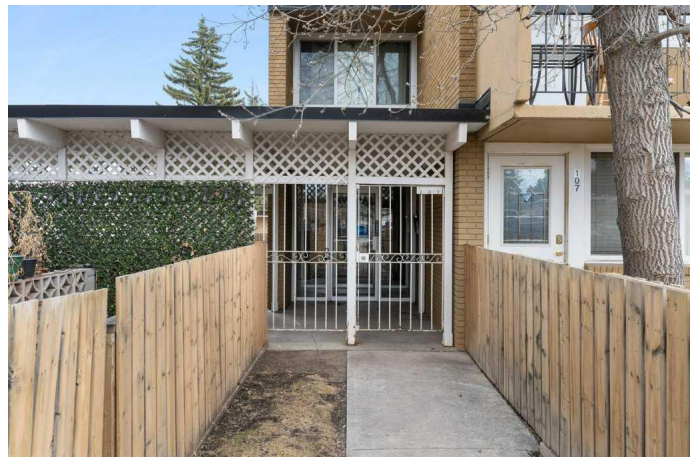
This charming lower floor one-bedroom studio is nestled in the vibrant community of Kingsland and offers an open-concept living arrangement designed for comfort and functionality. With a low condo fee of just \$237.40/month which includes heat, gas, and water this unit is both economical and efficient. Enjoy the convenience of being just steps away from Chinook Centre, the Chinook LRT Station, and a variety of restaurants and shops all within easy walking distance. Whether you're a first-time buyer or a savvy investor, this is a fantastic opportunity to own rather than rent.

Built in 1965

## Essential Information

MLS® #	A2210315
Price	\$179,900
Bedrooms	1
Bathrooms	1.00
Full Baths	1
Square Footage	387
Acres	0.00
Year Built	1965
Type	Residential
Sub-Type	Apartment
Style	Loft
Status	Active

## Community Information



Address	222, 7007 4a Street Sw
Subdivision	Kingsland
City	Calgary
County	Calgary
Province	Alberta
Postal Code	T2V 1A1

### **Amenities**

Amenities	Coin Laundry, Visitor Parking
Parking Spaces	1
Parking	Off Street, Stall

### **Interior**

Interior Features	See Remarks
Appliances	Electric Stove, Microwave, Refrigerator
Heating	Baseboard, Hot Water
Cooling	None
# of Stories	4

### **Exterior**

Exterior Features	None
Construction	Brick, Concrete

### **Additional Information**

Date Listed	April 9th, 2025
Days on Market	9
Zoning	M-C1

### **Listing Details**

Listing Office	Royal LePage Mission Real Estate
----------------	----------------------------------

Data is supplied by Pillar 9â„¢ MLSÂ® System. Pillar 9â„¢ is the owner of the copyright in its MLSÂ® System. Data is deemed reliable but is not guaranteed accurate by Pillar 9â„¢. The trademarks MLSÂ®, Multiple Listing ServiceÂ® and the associated logos are owned by The Canadian Real Estate Association (CREA) and identify the quality of services provided by real estate professionals who are members of CREA. Used under license.