

\$549,900 - 7, 1729 34 Avenue Sw, Calgary

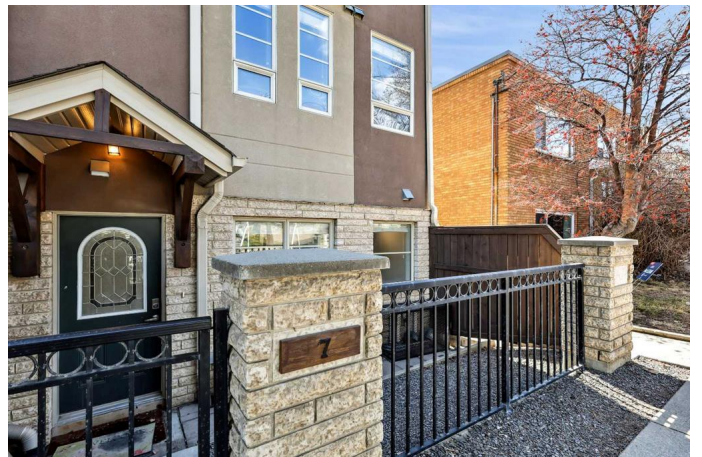
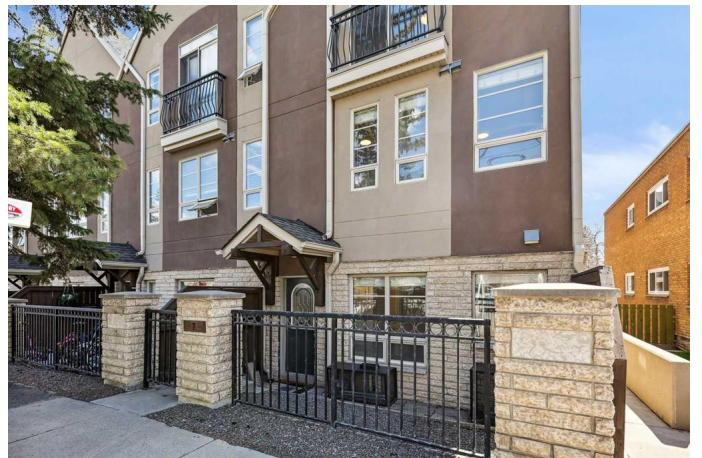
MLS® #A2213446

\$549,900

3 Bedroom, 3.00 Bathroom, 1,376 sqft
Residential on 0.00 Acres

Altadore, Calgary, Alberta

**** OPEN HOUSE Sat Apr 26, 2025 2pm - 4pm ***** Welcome to this beautifully maintained three-storey end-unit townhouse, ideally situated in the heart of Altadore—one of Calgary’s most vibrant and sought-after inner-city communities. Offering the perfect balance of modern living and urban convenience, this stylish home is just steps away from the lively Marda Loop district, where you’ll find a wide array of trendy shops, local boutiques, and everyday amenities. With easy access to public transportation and a quick commute to downtown, this is the perfect location for professionals, young families, or anyone looking to enjoy the best of inner-city living. This spacious and thoughtfully designed townhouse features 3 bedrooms, 2.5 bathrooms, and an attached private tandem garage that provides both convenience and added storage. Recently refreshed with new paint throughout and plush new carpeting, the home offers a bright and welcoming feel the moment you step inside. The main level boasts an open-concept living space highlighted by a cozy corner gas fireplace, perfect for relaxing or entertaining. The adjoining gourmet kitchen showcases granite countertops, sleek stainless steel appliances, ample cabinetry, and a convenient breakfast bar for casual dining. Upstairs, you’ll find two generously sized bedrooms, a well-appointed 4-piece main bathroom, and a convenient laundry area. The third level is



dedicated to a primary retreat, complete with soaring vaulted ceilings, large windows that flood the space with natural light, and a spacious walk-in closet. The spa-inspired 5-piece ensuite has been tastefully updated with dual vanities, a luxurious soaker tub, and a separate shower, creating a serene sanctuary to unwind in. The lower level offers practical touches including a mudroom, a well maintained mechanical room, and direct access to the attached tandem garage. Whether you're commuting downtown, heading to a nearby park, or meeting friends for brunch in Marda Loop, this home puts you in the center of it all. With its unbeatable location, modern updates, and smart layout, this townhouse presents an exceptional opportunity to own in one of Calgary's most dynamic and walkable neighborhoods.

Built in 2005

Essential Information

MLS® #	A2213446
Price	\$549,900
Bedrooms	3
Bathrooms	3.00
Full Baths	2
Half Baths	1
Square Footage	1,376
Acres	0.00
Year Built	2005
Type	Residential
Sub-Type	Row/Townhouse
Style	3 Storey
Status	Active

Community Information

Address	7, 1729 34 Avenue Sw
Subdivision	Altadore

City	Calgary
County	Calgary
Province	Alberta
Postal Code	T2T 2B7

Amenities

Amenities	Snow Removal, Trash
Parking Spaces	2
Parking	Single Garage Attached, Tandem
# of Garages	2

Interior

Interior Features	Breakfast Bar, Ceiling Fan(s), Granite Counters, Kitchen Island, Open Floorplan, Walk-In Closet(s)
Appliances	Dishwasher, Dryer, Microwave, Refrigerator, Stove(s), Washer, Window Coverings
Heating	Fireplace(s), Forced Air, Natural Gas
Cooling	None
Fireplace	Yes
# of Fireplaces	1
Fireplaces	Gas, Living Room
Has Basement	Yes
Basement	Finished, Partial

Exterior

Exterior Features	None
Lot Description	Low Maintenance Landscape, Street Lighting
Roof	Asphalt Shingle
Construction	Stone, Stucco, Wood Frame
Foundation	Poured Concrete

Additional Information

Date Listed	April 25th, 2025
Days on Market	1
Zoning	M-C1

Listing Details

Listing Office	Greater Property Group
----------------	------------------------

Data is supplied by Pillar 9â„¢ MLSÂ® System. Pillar 9â„¢ is the owner of the copyright in its MLSÂ® System. Data is deemed reliable but is not guaranteed accurate by Pillar 9â„¢. The trademarks MLSÂ®, Multiple Listing ServiceÂ® and

the associated logos are owned by The Canadian Real Estate Association (CREA) and identify the quality of services provided by real estate professionals who are members of CREA. Used under license.